

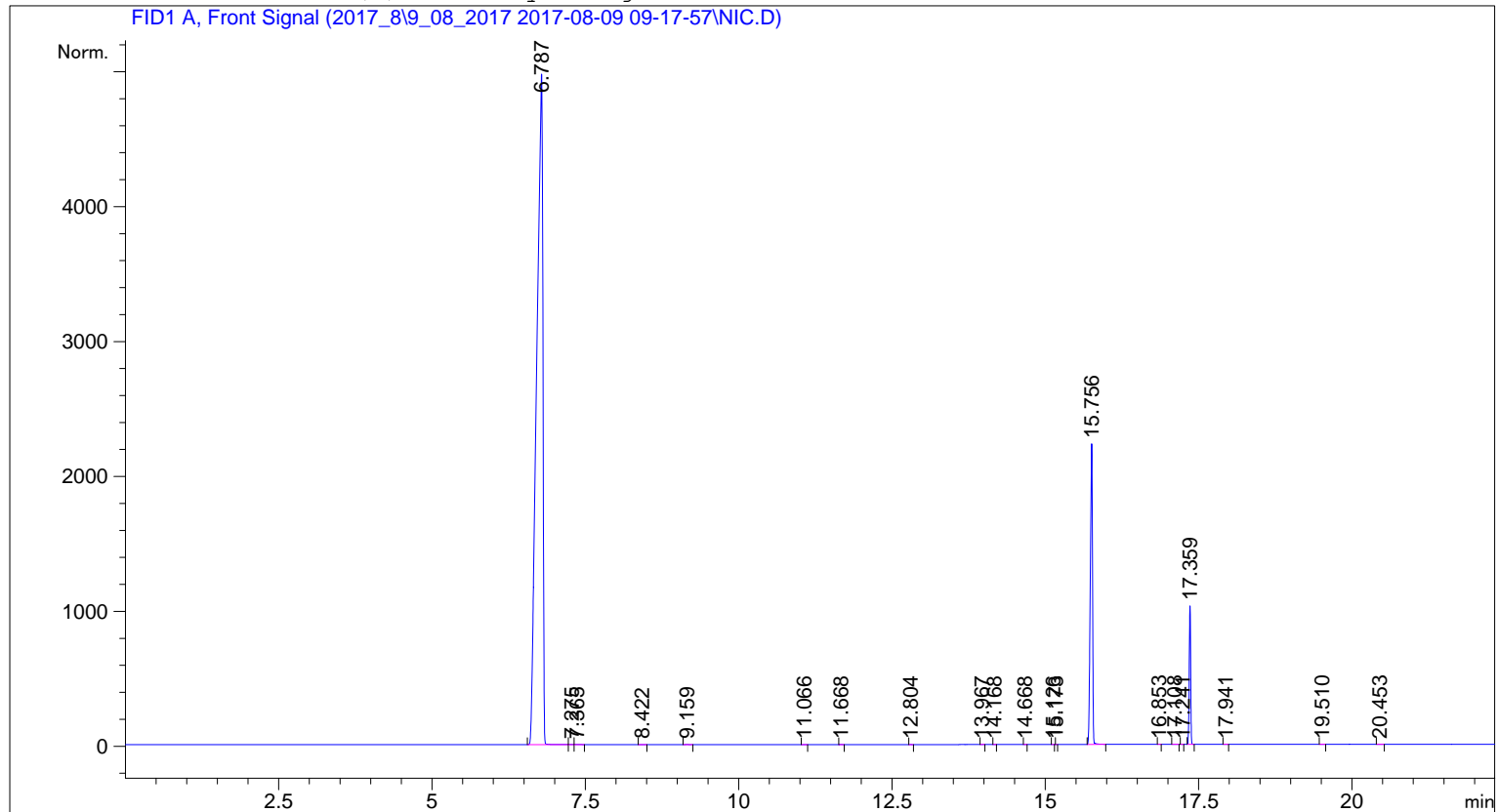
```

=====
Acq. Operator   : Agilent SE                      Seq. Line :    4
Acq. Instrument : Instrument 1                    Location  : Vial 4
Injection Date  : 09.08.2017 10:36:28           Inj       :    1
                                                Inj Volume: 2 µl

Acq. Method     : C:\CHEM32\1\DATA\2017_8\9_08_2017 2017-08-09 09-17-57\UOS_6.M
Last changed    : 09.08.2017 10:36:22 by Agilent SE
                  (modified after loading)

Analysis Method  : C:\CHEM32\1\METHODS\PR_NIC.M
Last changed    : 09.08.2017 11:42:44 by Agilent SE
Method Info     : Содержание пропиленгликоля и никотина в
                  метаноле
    
```

Additional Info : Peak(s) manually integrated



External Standard Report

```

Sorted By           : Signal
Calib. Data Modified : 09.08.2017 11:41:15
Multiplier          : 1.0000
Dilution            : 1.0000
Do not use Multiplier & Dilution Factor with ISTDs
    
```

Signal 1: FID1 A, Front Signal  
 Uncalibrated Peaks : compound name not specified

RetTime [min]	Type	Area [pA*s]	Amt/Area	Amount [%]	Grp	Name
6.787	MF	3.45621e4	0.00000	0.00000	?	
7.275	FM	1.19125	0.00000	0.00000	?	
7.365	FM	1.17857	0.00000	0.00000	?	
8.422	BB	2.99100e-1	0.00000	0.00000	?	
9.159	BB	1.02934	0.00000	0.00000	?	
11.066	BB	1.83467e-1	0.00000	0.00000	?	
11.668	BB	1.20066	0.00000	0.00000	?	
12.804	BB	3.80129e-1	0.00000	0.00000	?	

RetTime [min]	Type	Area [pA*s]	Amt/Area	Amount [%]	Grp	Name
13.967	BB	1.38193e-1	0.00000	0.00000	?	?
14.168	BB	1.79394e-1	0.00000	0.00000	?	?
14.668	BB	8.65178e-2	0.00000	0.00000	?	?
15.126	MM	3.78981e-2	0.00000	0.00000	?	?
15.173	MM	4.37427e-2	0.00000	0.00000	?	?
15.756	BB	5629.84863	1.57792e-2	87.83427		prop
16.853	BB	2.54702	0.00000	0.00000	?	?
17.108	BB	6.22068e-1	0.00000	0.00000	?	?
17.241	MM	1.16682e-1	0.00000	0.00000	?	?
17.359	BB	1648.56836	8.01677e-3	12.21619		nic
17.941	MM	9.80369e-2	0.00000	0.00000	?	?
19.510	BB	1.17250	0.00000	0.00000	?	?
20.453	BB	1.07130	0.00000	0.00000	?	?

Totals : 100.05046

1 Warnings or Errors :

Warning : Calibration warnings (see calibration table listing)

=====  
\*\*\* End of Report \*\*\*